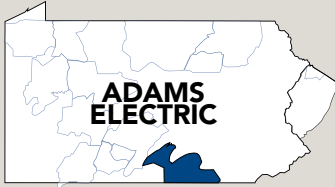




Adams Electric Cooperative, Inc.

A Touchstone Energy® Cooperative 



One of 14 electric cooperatives
serving Pennsylvania and New Jersey

Adams Electric Cooperative, Inc.

1338 Biglerville Road
P.O. Box 1055
Gettysburg, PA 17325-1055
1-800-726-2324

Gettysburg District

1380 Biglerville Road
Gettysburg, PA 17325

York District

200 Trinity Road
York, PA 17408

Shippensburg District

10 Duncan Road
P.O. Box 220
Shippensburg, PA 17257

BOARD OF DIRECTORS

Glenn E. Bange, President
Nadine M. Hubner, Vice President
Daniel E. Eisenhart, Secretary
Thomas J. Knaub, Treasurer
Jay E. Grove
Jay A. Herman
S. Eugene Herritt
Dale E. Myers
F.L. "Ray" Schwartz

District Office Hours

Monday through Thursday
7 a.m. - 5 p.m.

Check out adamsec.coop

Like us on Facebook at
[Facebook.com/AdamsEC](https://www.facebook.com/AdamsEC)

Local Pages Editor: Kami Noel, CCC

*This institution is an equal opportunity
provider and employer.*

From the CEO/General Manager



Seven principles embody co-op difference

By Steve Rasmussen

DID YOU know giving back to local communities is one of our founding principles? Cooperatives across the globe adhere to the same Seven Cooperative Principles that guide all our decisions — from how we run the co-op to how our directors and employees get trained.

Cooperatives are voluntary organizations, open to all persons able to use their services. Through principle one, **voluntary and open membership**, Adams Electric has worked to keep our zones equitably distributed among its directors, with the most recent rezoning in 2014. We avoid bias in membership acceptance and treat all members fairly and impartially across the board, re-evaluating rate classes and returning Ownership Rewards equitably among former and current members.

We continue that process with an annual election of directors on a three-year cyclical process. Principle two, **democratic member control**, encourages member-owner participation in the changing of bylaws, and the election of directors. The election process has evolved greatly through the years with the addition of electronic voting, but also with the consolidation of two voting periods into one for the sake of member understanding and monetary savings. No matter how it's done, the control remains with you, the member.

Speaking of savings, principle three, **members' economic participation** is a critical building block to the business model we operate under. Being a not-for-profit organization, we don't take in more revenue than is necessary, gener-

ating enough to build and maintain an electric infrastructure that can sustain growing electric loads and increased power use by consumers. What's left over is given back to our members as Ownership Rewards.

Your Ownership Rewards amount is based upon the amount of electricity you use each year and grows every year you continue to purchase electricity from the co-op. The actual amount is indicated on your electric bill in May. Each year, a percentage of that equity is returned to you. In 2019, Adams Electric returned \$1.85 million, bringing the amount returned to members for all years to more than \$42 million. Watch your mailbox in March for 2020 returns.

Cooperatives are by model "self-help" organizations. We're **autonomous and independent** (principle four), controlled by the members who own and govern us. We operate outside the jurisdiction of the Pennsylvania Public Utility Commission (PUC) yet mirror many of the rules and regulations of the PUC. Our directors, users of the power we distribute, help set rates annually and review the co-op's financial condition. In 2019, the board was able to authorize a rate realignment for members to fix an overcollection of energy supply costs and recover increasing expenses to deliver electricity. In 2020, members were encouraged by news of no rate increase, unlike the investor-owned utilities around us who adjust rates quarterly.

Principle five is more generally focused. The guideline encourages "**education, training and information**" for not only members but employees, staff,

(continues on page 12c)

COMMUNITYconnections

POWERING LOCAL ORGANIZATIONS

Students putting trade scholarships to good use

By Duane Kanagy, *Penn Lines Correspondent*

ENROLLMENT in postsecondary trade schools rose from 9.6 million students in 1999 to 16 million in 2014, according to the National Center for Education Statistics. This follows a decline in enrollment in the 1980s and 1990s that created a shortage of skilled workers and tradespeople in expanding fields such as construction, transportation, food arts, and cosmetology.

With that in mind, Adams Electric expanded its scholarship opportunities in 2019 with new \$1,000 awards to high school seniors (sons and daughters of co-op members) who plan to attend a postsecondary career or trade school. The idea is to assist students who pursue higher education that eventually helps them become builders, plumbers, electricians, chefs, bakers, auto mechanics, auto body workers and other trade-related apprentices.

Bryson Plank and Julie Shuyler were the first two student recipients of these career and trades scholarships. Both graduated from Adams County Tech Prep, a career and technical school for students in grades 11 and 12, in 2019.

Bryson, of Littlestown, is in his



ASPIRING BAKER: Julie Shuyler is learning to create an array of tasty baked goods in the kitchens of the Pennsylvania School of Culinary Arts in Lancaster. She is among the first to benefit from a new Adams Electric scholarship for students seeking career and trade education beyond high school.

second semester at Thaddeus Stevens College of Technology in Lancaster pursuing an associate degree in collision repair technology. The curriculum includes honing his skills during an “externship” with a local employer before seeking full-time employment after graduation.

“I chose Thaddeus Stevens because it is close to home and it’s affordable,” says Bryson, adding he hopes to find a job somewhere close to home after graduation in 2021.

Collision repair is a growing field with a high demand for skilled workers, he notes.

Bryson became interested in auto body work at age 13 when he first helped a neighbor restore a Chevy Corvette. This semester, he will help prime and paint a Chevy S-10 pickup truck at Thaddeus Stevens.

Julie, of Gettysburg, is seeking a one-year certificate in pastry arts at the Pennsylvania School of Culinary Arts, a division of York Technical Institute (YTI) Career Institute — Lancaster campus.

“YTI is close to home and they offered a program in a job field I wanted to enter,” Julie says. She will learn how to create puff pastries, pies and tarts, soufflés, and all kinds of breads. She will also discover how to plate desserts and decorate cakes and other confections.

“All the instructors are very helpful,” Julie says, adding she would like to do an externship with Hotel Hershey later this year.

Julie first discovered a love for food preparation watching and working with her mother and grandmother during Sunday dinners. Her future may involve continuing her education in culinary arts and hospitality management after YTI. Eventually, Julie wants to open her own business.



DAZZLING WORK: Bryson Plank is among the first to benefit from a new Adams Electric scholarship for students pursuing post secondary career and trade education. He is pursuing a two-year degree in collision repair technology at Thaddeus Stevens in Lancaster.

Adams Electric has provided more than \$300,000 in continuing education scholarships to members and their sons and daughters since 2008. Those include over 250 high school seniors, six college undergraduates and 100-plus adults. The awards are funded with unclaimed Ownership Rewards. High school academic, high school career and trades, and undergraduate applications are currently being accepted. For more information, visit adamsec.coop and click on “My Education.”

Co-op celebrates Connections with program enhancements

By Sarah Frank, CCC, *Communications/Community Relations coordinator*

TRADITIONALLY, reaching a 10-year anniversary milestone is celebrated with a gift of tin or aluminum. In February, Adams Electric marked one decade with Co-op Connections, the cooperative's member discount card program. Rather than mailing out metal, the co-op is adding new enhancements to the program.

In 2020, more than 500,000 exclusive entertainment and travel offers were unlocked on the *connections.coop* website. These perks include discounts on theme parks, movie tickets, hotels, cruises, rental cars and more. To see the deals, visit *connections.coop/adamsdeals* and use the tabs at the top to navigate to your desired discount category (for example, Tickets or Travel).

Launched in February 2010, the program continues to offer members discounts at local participating businesses (see a full list online) and nationwide through your member discount card or using promo codes on online purchases. Each membership should have received a program card in the mail either when you joined the cooperative or during the program's unveiling 10 years ago. New cards can be requested online through the website.

The Co-op Connections discount program also has a pharmacy savings component through which Adams Electric members have saved more than \$262,240 on over 10,000 prescriptions since the program's inception. The program has saved members more than \$1 million on prescriptions

From the CEO/General Manager

(continued from page 12a)

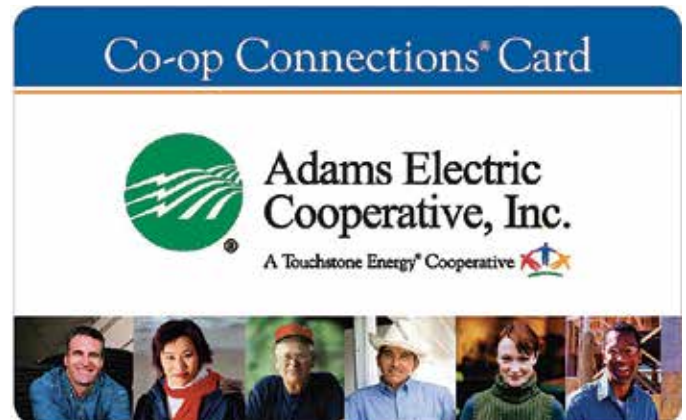
board, legislators, community leaders, and the general public. All facets can contribute to the effective development of the cooperative, particularly those in a position of opinion. The cooperative uses membership committees, public meetings, and legislative and community involvement to share our voice. We both train and educate our directors and employees on a regular basis on new technologies, power sector advancements, and ongoing legislation that could affect cooperatives or rural communities. We also focus on the youth with a large investment in scholarships, and the public with safety messages and education.

Cooperatives serve their membership most effectively, though, when all groups work together. Principle six, **cooperation among cooperatives**, used to be personnel-based with operations employees being called to provide mutual assistance to other cooperatives

within the state, region or country. Today, this principle also includes the sharing of programs and information, cross and shared training sessions, and sending messages to local congressional representatives in support of or against pending legislation.

And finally, back to where it all began, principle seven shows our **concern for community**. Working toward sustainable development efforts, we directly support the communities in which we live, work, and thrive by sponsoring school and sporting events, installing EV chargers at local businesses, teaching the youth of our community about local trades by sponsoring student-built construction projects on our properties and in our counties of service, and offering scholarships and member assistance programs for memberships at all levels of income and ability.

These are the principles Adams Electric was built on more than 80 years ago, and they continue to guide us in

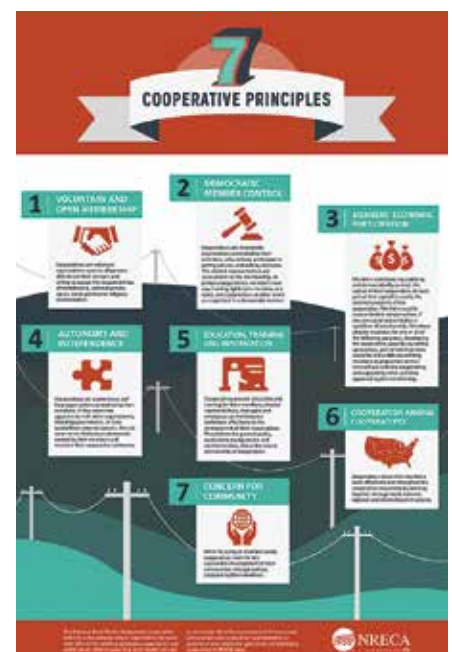


nationally. The card does not replace insurance.

Download the Co-op Connections app to your smartphone or tablet to get discounts and coupons directly to your phone based on your current location. You can also download an electronic copy of your card to your phone, research health care providers who may participate in the program, and find information about 24-hour towing and roadside assistance programs.

For more information on deals and discounts, visit *connections.coop/adamsdeals* and register for an account. Members may call 1-800-726-2324 for program information. Deals must be requested online by individual members. 🌞

our day-to-day operations and decisions. Working together, these seven principles truly embody the cooperative difference we honor and practice. 🌞



NEWSworthy

NOTES FROM AROUND YOUR COOPERATIVE

Co-op hires member services rep, promotes lineman

Adams Electric Cooperative hired **Morgan Crider** of Shippensburg in January to fill its member services representative position within the Shippensburg District.

Crider joins the co-op following a career at Miller Family Dentistry, Chambersburg, as a front desk receptionist. She received her bachelor's degree from Shippensburg University and is a grad-

uate of Chambersburg High School.

Additionally, Second Year Apprentice Lineman **Adam Waldron** was promoted to third year apprentice following a series of skills and written tests. Waldron has been with the cooperative since 2013 and currently resides in Aspers, Pa.

For more information about careers at Adams Electric, visit adamsec.coop.



Morgan Crider



Adam Waldron

Youth scholarships applications available online

HONORING the cooperative principle of "Concern for Community," Adams continues to grow its scholarship programs, further supporting the future leaders of our community. The cooperative's high school and undergraduate college scholarship programs are accepting online applications.

There are two options for high school applicants, one for high school seniors specifically pursuing vocational/technical careers, and the other for academic college/university pursuits. Each program has its own

required application, sometimes differing by school. Interested applicants should review the options and find the application source that best suits their needs at www.adamsec.coop/content/scholarships. Applicants must have at least one parent or legal guardian with an Adams Electric residential billing account in good standing. Applicants may attend a public, private, tech prep, home-school or

cyber school as long as they meet the criteria of the application. All scholarships are \$1,000 each.



The co-op will also award up to eight scholarships in the amount of \$1,000 each to college students who are currently enrolled in and taking classes at a post-secondary school or accredited training program (two-year, four-year or trade/technical) and are sons or daughters of a co-op member. These applications are reviewed by Adams Electric's member-volunteer Scholarship Committee. A link to the application can be found at www.adamsec.coop/content/undergraduate-college-scholarship through mid-March.

The cooperative works in partnership with the Adams County Community Foundation to administer its scholarships. For more information, on applications or requirements, call 1-800-726-2324. ☀



READY TO READ: These scholarly members of the cooperative have volunteered to read and evaluate the applications of this year's undergraduate and adult scholarship hopefuls. Shown from left to right are: Brian Lott, Zach Boyer, Laverne Musser, Rev. Rob Hudson, Jim Myers, Kathy Keller, Peggy Magaldi, Betty Lipschutz and Director Liaison Nadine Hubner.



HELP OUR MEMBERS HELP THEMSELVES.

Donate your Ownership Rewards check to Project Helping Hand.

Donating is easy!

- 1** Sign (endorse) the check on the back.
- 2** Below your signature, write: Deposit to "Project Helping Hand Fund at Adams County Community Foundation"
- 3** Send the check to:



ENDORSE CHECK HERE John Q. Member
Deposit to Project Helping Hand
Fund at Adams County Community
Foundation

Project Helping Hand donations directly help qualifying Adams Electric Cooperative members who are struggling to pay their electric bills. PHH is a fund of the Adams County Community Foundation and your donation is tax deductible to the extent allowed by law.

Adams Electric Cooperative
 1338 Biglerville Road, P.O. Box 1055
 Gettysburg, PA 17325-1055



**Adams Electric
 Cooperative, Inc.**

® A Touchstone Energy® Cooperative 

1-800-726-2324 | adamsec.coop

How PHH works:

PHH provides once-a-year assistance to Adams Electric consumer-members for utility shut-off protection. Participants may join or cancel participation any time during the year by contacting the cooperative. Applicants may only receive funds from the agency in the county in which they reside and may only receive assistance one time per calendar year for a member's primary residence. Call 1-800-726-2324 for more information.



**PROJECT
 HELPING
 HAND**