

Regular Residential Rate*

June through September: \$.102 per kilowatt-hour (kwh)**

All Other Months: \$.080 per kwh

Time-of-Day Rate*

On-Peak Rate

June through September: \$.171 per kilowatt-hour (kwh)**

All Other Months: \$.109 per kwh

Off-Peak Rate

All Months: \$.058 per kwh

Hours

On-Peak: 7 a.m.-7 p.m. weekdays

Off-Peak: All other hours, including weekends, plus New Year's Day, Memorial Day, Independence Day, Labor Day, Thanksgiving and Christmas.

Interruptible (ETS) Rate*

For all electric use through a separately-metered subpanel

All Months: \$.051 per kilowatt-hour (kwh)**

For all remaining electric use

See Regular Residential Rate above

* A monthly access charge of \$25.75 applies to all rates listed above.

** One kilowatt-hour equals 1,000 watt-hours — the equivalent of 10 light bulbs (100 watts each) burning for one hour.

PLEASE NOTE: The rates listed above are as of Nov. 1, 2009. Projected cost savings in this brochure are strictly estimates. Your results will vary depending upon equipment and appliance use, age and condition.

If you have questions or need to talk about your rate, please call toll-free 888/232-6732 or 717/334-2171

Online at: www.adamsec.coop

Headquarters Office

1338 Biglerville Road
Gettysburg, PA 17325
717/334-9211

Gettysburg District Office

1380 Biglerville Road
Gettysburg, PA 17325

Shippensburg District Office


204 West King Street
Shippensburg, PA 17257

York District Office

200 Trinity Road
York, PA 17408



**Adams Electric
Cooperative, Inc.**

A Touchstone Energy® Cooperative 

Save Money Around the Clock



Adams Electric's time-of-day and interruptible rates

Are these rates right for you?

Adams Electric's cost to purchase and distribute electricity is highest on weekdays during the hours of peak demand for electricity. In the summer, demand peaks often happen during the afternoon hours. In the winter, demand peaks often occur in the early morning and early evening hours.

To keep costs low for all members, Adams Electric provides a rate incentive to those

who can shift a portion of their electricity use to off-peak hours, or who can allow their electricity to be interrupted for a period of time.

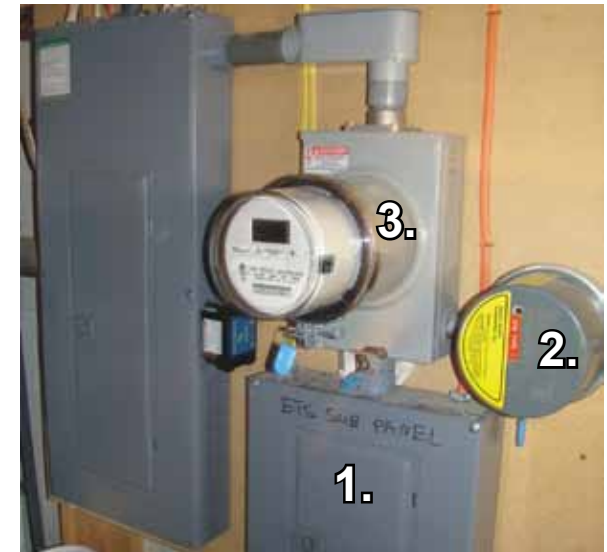
This brochure will help you determine whether you are a good candidate for either the time-of-day rate or the interruptible/electric thermal storage (ETS) rate.

Don't mind interruptions?

Adams Electric has a residential interruptible (ETS) rate for members who allow the co-op to interrupt power to certain appliances during periods of high demand for power.

A lower year-round rate is offered in return for permission to occasionally interrupt service. Members install a separately-metered subpanel at their cost. The co-op installs a meter and a load control switch on the subpanel at no cost to the member (\$155 value).

All electric used through the subpanel is charged at the lower interruptible rate. The savings off the co-op's regular residential rate can be almost 50 percent in the summer (June-September) and nearly 35 percent in the winter for any appliance hooked into the subpanel. The member assumes the risk of loss for appliances on the interruptible rate.



IN CONTROL: In this scenario, all electricity that flows through a subpanel (1.), attached to a main panel in a home, is priced at the interruptible rate. A load control switch (2.) controls power to the subpanel, which has its own meter and meter base (3.).

Time-of-day: The more you move, the more you save

Adams Electric provides a rate incentive to those who can shift most of their electricity use to off-peak hours — after 7 p.m. and before 7 a.m. on weekdays or any time on major holidays and weekends.

Members on time-of-day (TOD) pay less for electricity used during off-peak hours and a higher rate for power used during on-peak hours. The on-peak rate is higher during the months of June through September than during the rest of the year. The off-peak rate stays the same year-round.



Can you save with TOD?

The average member uses 60 percent of his or her electricity off-peak and 40 percent on-peak already. If you are a residential account with average household demand and can make a few lifestyle changes, you could be a good candidate for TOD. Check the boxes below. The more you can check the more you will benefit.

- I don't use central air conditioning.
- I work full-time during the day on weekdays.
- I have fewer than four people living in my household full-time.
- I can run the washer and dryer during off-peak hours.
- I can put a timer on my electric water heater.
- I can operate my electric stove or oven off-peak.
- I can keep most of the lights off in my home during on-peak hours.